

Andrew McIntosh

Ten Million Flowers

for violin and piano

(2021-22)

PLAINSOUND MUSIC EDITION

commissioned by I&I Foundation and dedicated to Ilya Gringolts

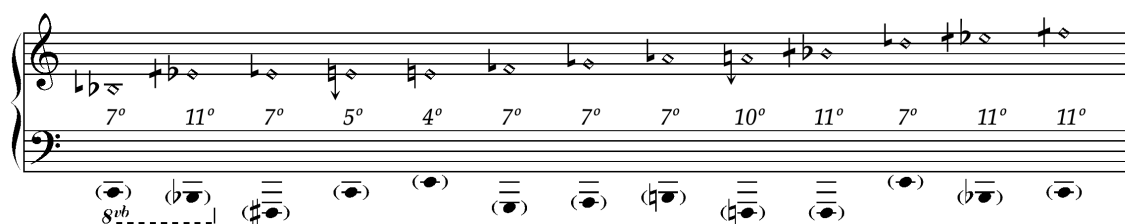
Performance notes:

Ten Million Flowers uses a slight microtonal scordatura on the lowest string of the violin as follows:


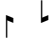
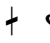


This can be achieved simply by using a tuner, or by tuning it to the 7th partial harmonic on a low A-string of the piano.

The piano also uses a number of harmonics, which can be marked in advance by a method such as tying small pieces of yarn around the string at the harmonic node. Here is a full list of the harmonics used in the piano part:



The piece uses the following microtonal accidentals from the Helmholtz-Ellis J1 pitch notation, designed by Marc Sabat and Wolfgang von Schweinitz.

-  alteration of a syntonic comma: 21.5 cents from tuning in pure fifths (for intervals related to just major and minor thirds and sixths)
-  alteration of a septimal comma: 27.3 cents from tuning in pure fifths (for intervals related to the 7th partial, eg.: just minor sevenths or tenths)
-  alteration of a quarter-tone: 53.3 cents (for intervals related to the 11th partial)

Movement II (Canon), is written only in individual parts, with no score, since the vertical alignment is flexible and can change at every performance.

Duration: apr. 16 minutes

for Ilya Gringolts

Ten Million Flowers

I. Phrases

Andrew McIntosh

• = 65, but extremely flexible

Violin

IV IV , IV ,

poco *poco* *sim.*

mf gentle, clear, focused

Piano

7° 7° 7° 7°

mf *mp* *p* *mp*

ped. sempre

2

Violin

IV , 5° III ;

Piano

7° 7° 11° 11°

mf *p* *pp* *p*

3

IV , IV ,

7° 7° 7° 7°

mp *p*

4

, 5° III ^;

7° 7° 11° 11°

mf *p* *pp*

5

III III *poco vib.* III *non vib.* III *poco vib.* ,

11° 11° 7° 7°

mp *mf* *8^{va} | mp*

6

non vib. IV , 5° III ^ ;

7° 7° 11° 11°

p *p* *mp* *mf*

7

IV , IV ,

4° 11° 4° 11°

mp *pp*

8

IV , 5° III ^ ;

(on keys) 11° 11° 11°

p *mf* *mp*

9

IV, III, III (non vib.)

mp 7° 7°

p

10

IV, III, 5°

mp 11° 11°

pp *p*

11

III, II, IV, III, IV 5/4

III 5/4 -41 c → mst → ord. , III IV 5/4 sim.

mf 11° *p* 11° *pp*

mp

12

III
IV 9/7

III
, IV 9/7

mp

p

mf

pp

4°

13

III
IV 5/4

III
, IV 5/4

mf

p

mp

pp

11°

11°

11°

8^{vb}

8^{vb}

14

III
IV 9/7

III
, IV 9/7

mp

p

pp

4°

mp

poco vib.

non vib.

II. Canon (Piano)

Piano

f sempre

ppp sempre

apr. 20-25"
per system

The image shows a musical score for piano and violin. The piano part is written on two staves (treble and bass clefs) and consists of a sequence of chords and single notes. The violin part is written on a single staff (treble clef) and consists of a sequence of notes, some of which are marked with 'v' and 'V' to indicate bowing techniques. The score is numbered '7' in the top right corner.

**Violin entrance
(stay within 1-3 notes of violin)*

***Second entrance of the violin*

II. Canon (Violin)

Violin

*wooden mute
poco pont.*

p *p* *p > p* *sim., with variation*

*See piano score. Timing is flexible, but stay within 1-3 notes of piano.
 Try to balance volume of harmonics and stopped notes, prioritizing clarity.
 Notes can be legato or separated, with subtle variations.
 Try to match piano tuning.

**Second entrance - see piano score.

III. Vibrato

• = 60+

Violin

wooden mute
non vib.

Piano

6-8"
mf 5°
sim.
7°
5°

p
sim.

change bows as needed
IV

5°
7°

III

5°
10°
7°
10°

4

mf

III IV III IV III IV 15-25"

7°

(̄) (̄) (̄)

5

p

III p

p 7° 5°

(̄) (̄)

6

10-20"

10-20"

III IV poco pont.

mf

(on keys)

4°

mp

♩ = 52

IV. Triple

♩ = 110

Violin

metal mute
non vib.

f

7/3

III

9/7

Piano

8

III

III

mp

14

III

7/4

9/7

mp

21

III $7/4$

(-36c from C \flat to B \flat)

27

(-27c from B \flat to B \natural)

8va

mf *p*

33

rit. a tempo

9/7 4/3 9/7

mp *mf*

rit. a tempo

pp *p* *p*

40 rit. a tempo

5/3
(22c from B \flat to B \natural)

rit. a tempo

pp ppp

48 rit. a tempo

5/4
-41c
mf (27c from B \flat to B \natural)

rit. a tempo

11°

(\flat $\bar{\circ}$)
mp

55

III 11/6
-50c
(-9c from B \flat to B \natural)

7° 11°

8va
pp mp

($\bar{\circ}$) (\flat $\bar{\circ}$)
8 \flat
mf

63

f

f

8va

71

f

poco

sim.

79

III

9/7

mp

87

16/9 7/4

p *mp*

p *mp*

95

p *mp*

103

p *mp*

109

4°

p

115

mp

7°

mf

120

mp

va

126

8va--1

130

p

135

7°

mf

138

mp

142

mp

147

ff

f

7°

7°

151

11°

7°

11°

mp

ff

8^{vb}